

## PHYSIO SENSORS THOUGHT TECHNOLOGY

TECHNICAL DATA VERSION V1

### TECHNICAL SPECIFICATIONS PHYSIOLOGICAL SYSTEM - RECORDER UNIT

#### ENKODER: PROCOMP INFINITI™

Size	130 mm x 95 mm x 37 mm
PC-Connection	Glass fibre
Channels	8
Recording Frequency	2 channels with 2048 Hz 6 channels with 256 Hz

#### BLUETOOTH CONNECTOR

Compatible with ProComp Ininiti	
Range	up to 100 m

### TECHNICAL SPECIFICATIONS PHYSIOLOGICAL SYSTEM - SENSORS

#### EDA SENSOR

Size (approx.)	37 mm x 37 mm x 12 mm (1.45" x 1.45" x 0.45")
Weight (approx.)	25 g (1.0 oz)
Accuracy	+/- 5%
Channel Bandwidth	0.05 Hz - 1 kHz

#### TEMP-SENSOR

Length (approx.)	152 cm (60")
Weight	10 g (0.33oz)
Temperature range	10°C - 45°C (50°F - 115°F)
Accuracy	+/- 1.0°C (+/-1.8°F) 20°C - 40°C (68°F - 104°F)

#### BVP SENSOR

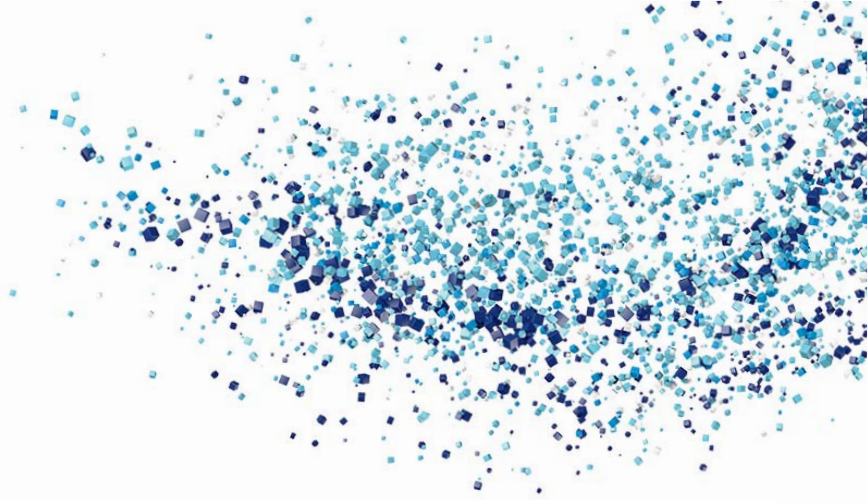
Length (approx.)	20 mm x 34 mm x 10 mm (0.72" x 1.33" x 0.41")
Weight	20 g (0.66 oz)
Accuracy	+/- 5%

#### ECG SENSOR

Size (approx.)	37 mm x 37 mm x 12 mm (1.45" x 1.45" x 0.45")
Weight (approx.)	25 g (1.0 oz)
Channel Bandwidth	0.05 Hz - 1 kHz
Accuracy	+/- 5%

#### POLAR ECG RECEIVER INTERFACE

Dimensions	25 mm x 23 mm x 11 mm
Weight	15 g
Output Waveform Digital pulses	15 mS



## RESPIRATION SENSOR (BELT)

Size (approx.)	132 cm (52" long)
Weight	30 g (1.0 oz)

## EMG MYOSCAN PRO

Size (approx.)	37 mm x 37 mm x 15 mm (1.45" x 1.45" x 0.60")
Weight with Cable (approx.)	25 g (1 oz)
Channel Bandwidth (Narrow)	100 Hz (+10 Hz / -20 Hz) – 200 Hz (+30 Hz/-20 Hz)
Channel Bandwidth (Wide)	20 Hz (+/- 10Hz) – 500 Hz (+/- 50 Hz)
Accuracy	+/- 5% and +/- 0.3 $\mu$ VRMS

## NIRS-SENSOR (HEG = HEMOENCEPHALOGRAPHY)

Size	12 cm x 8 cm x 3,5 cm
Weight	166,60 g (incl. rechargeable batteries)
Frequency range	460 – 800 Hz